



## Overview

The Multiple Sclerosis Data Alliance (MSDA) and the Multiple Sclerosis International Federation (MSIF) sought to **investigate the effects of COVID-19 on people with multiple sclerosis (MS)**. The [Global Data Sharing Initiative](#) central goal was to **collect and analyze data from around the world** on the effects of the virus on MS and MS treatments, with the aim of **providing vital, real-time, evidence-based information to doctors** and other medical professionals treating patients during the pandemic.

## Results

QMENTA was selected to provide a cloud-based platform that can easily accept, process and integrate multiple data types from 20 registries globally, facilitating and accelerating this important research.

 [www.qmenta.com](http://www.qmenta.com)

 [sales@qmenta.com](mailto:sales@qmenta.com)

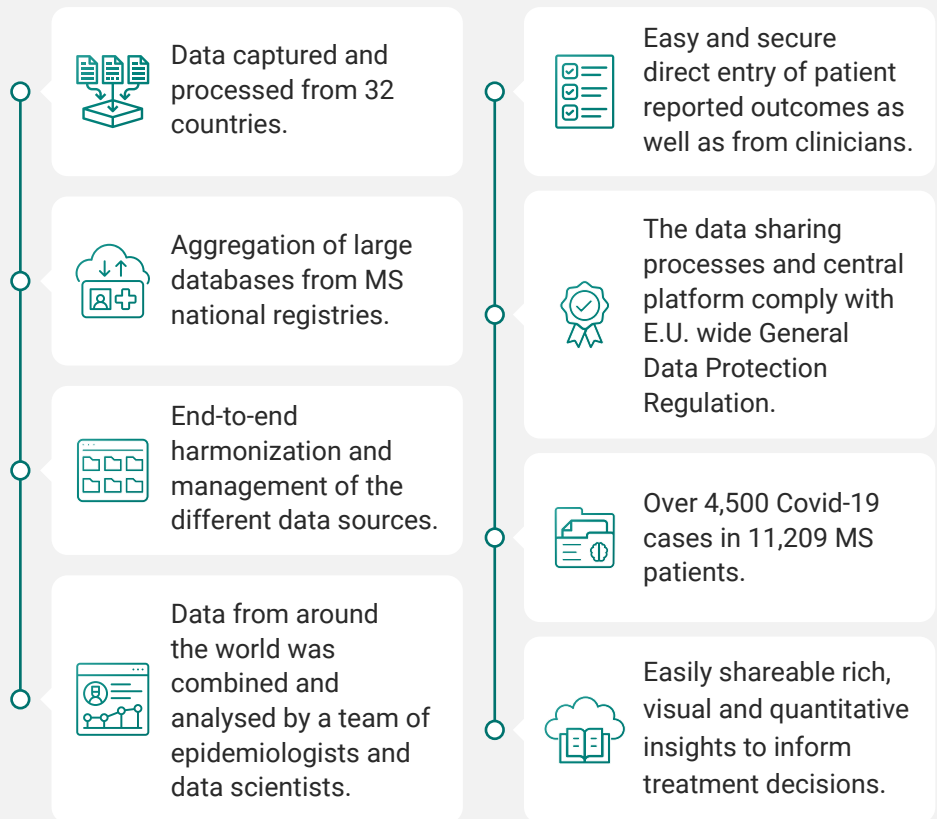


**“The QMENTA platform allows us to quickly gather, organize and share data between all collaborators while also ensuring the data is secure and protected”**

– Liesbet Peeters, PhD, MSDA Coordinator for the COVID-19, Global Data Sharing Initiative

## Sharing data to find answers faster

QMENTA partnered with this global initiative by donating its secure AI-powered, cloud-based, data integration platform to serve as the central hub for data collection and analysis.



## Results



**Rapid, safe, secure data aggregation and analysis**



**Ability to collaborate, share and publish results**



**Changed the clinical treatment guidance for patients with MS**